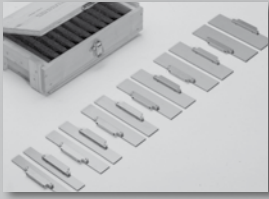
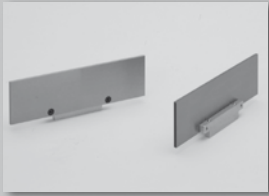


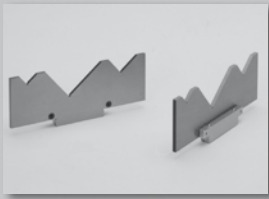
# Modular parallels and soft jaws/quick change "CLAK"



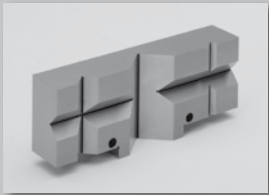
**Set of parallels (quick change)**  
pag. 4. 3



**Parallels (quick change)**  
pag. 4. 4



**Angular parallels (quick change)**  
pag. 4. 5



**V jaw (quick change)**  
pag. 4. 5



**Soft jaws (quick change)**  
**Steel**  
**Aluminium**  
pag. 4. 6



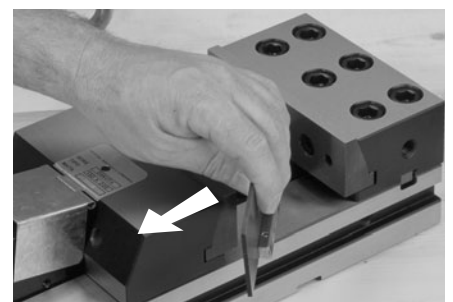
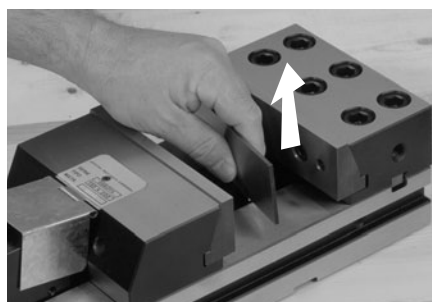
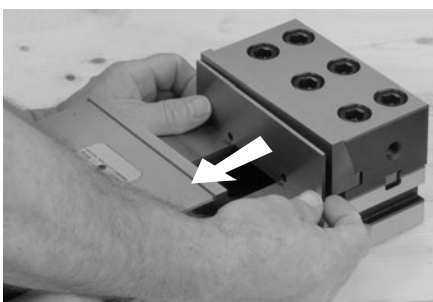
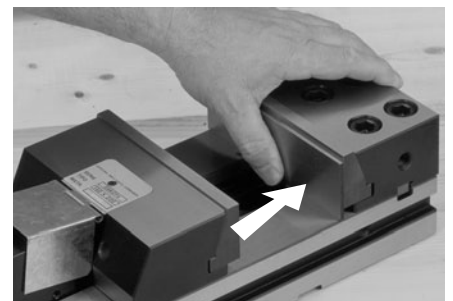
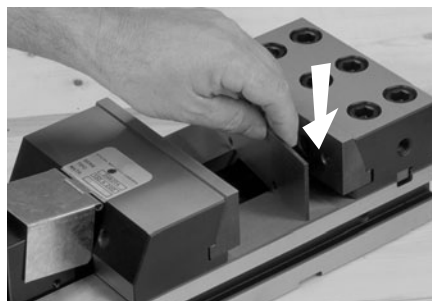
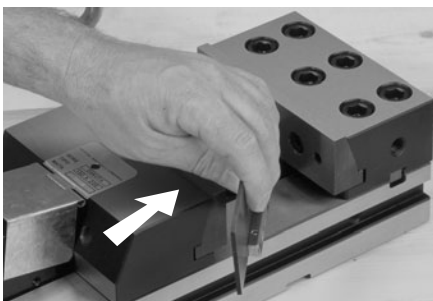
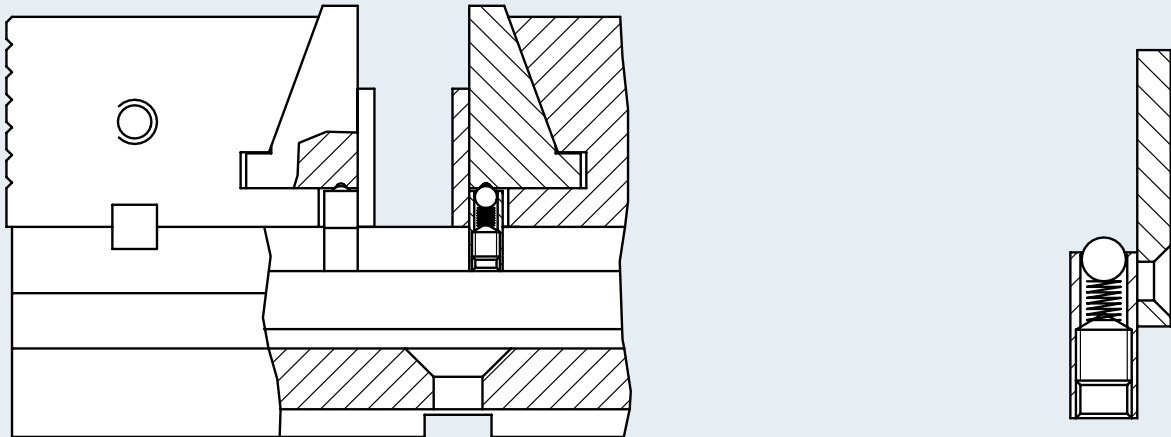
This new patented system allows the quick change of parallels, angular parallels, V-jaws, soft jaws for any type of workpieces.

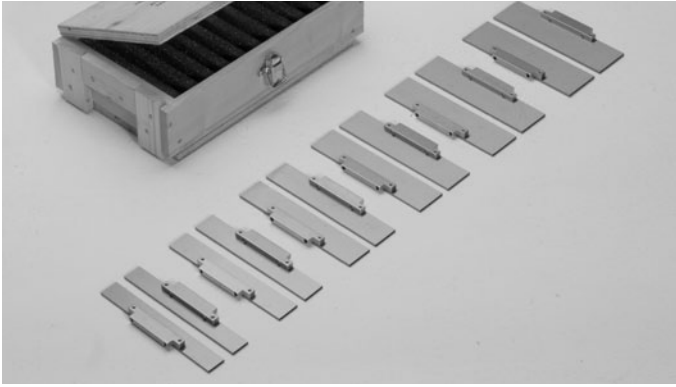
Benefits:

- Reduce downtime and set-up time
- Elimination of clamps and locks thanks to the patented self locking system
- Increase the accuracy of finished parts and reduce scrap

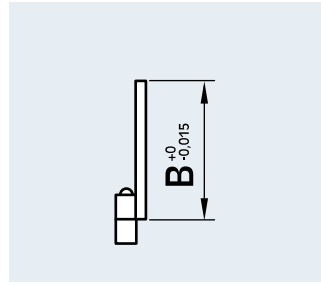
All components are case hardened and precision ground.

The CLAK system can be used for either the TC range or the MC range.





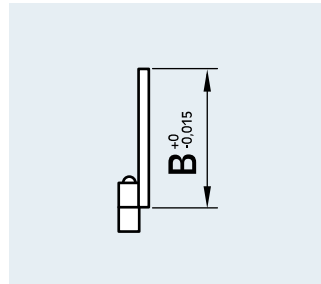
### Set of 6 pairs of parallels



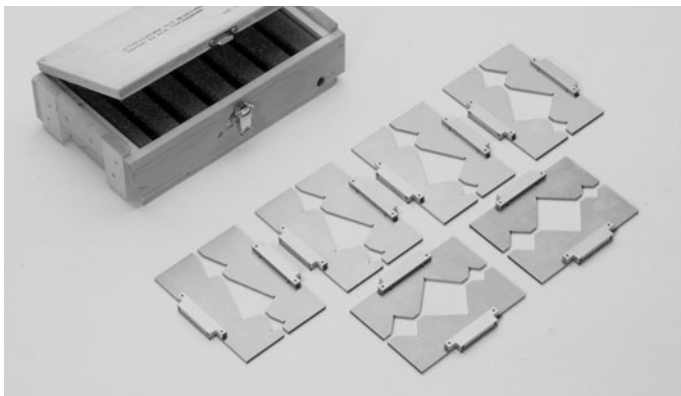
Cod.	for type	B mm					
		10	15	20	25	30	35
58 01 92 06	TC 110 x .../MC 125 x ...	10	15	20	25	30	35
58 02 92 06	TC 150 x .../MC 150 x ...	20	25	30	35	40	45
58 03 92 06	TC 200 x .../MC 200 x ...	20	30	40	50	60	65
58 04 92 06	TC 250 x ...	20	30	40	50	60	70



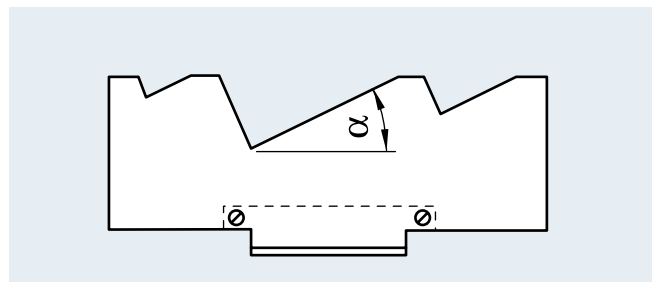
### Set of 10 pairs of parallels



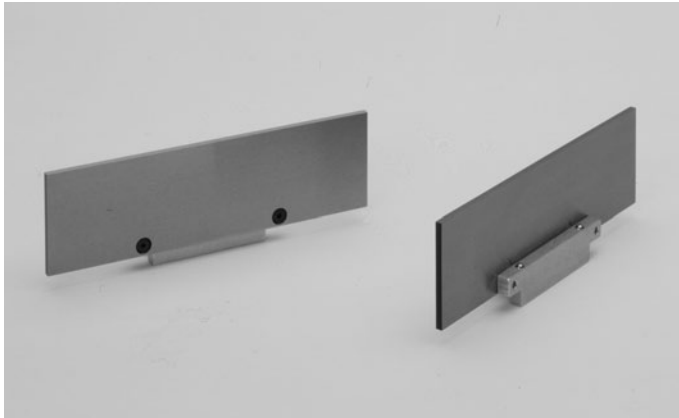
Cod.	for type	B mm									
		10	12	15	20	25	28	30	33	35	37
58 01 92 10	TC 110 x .../MC 125 x ...	10	12	15	20	25	28	30	33	35	37
58 02 92 10	TC 150 x .../MC 150 x ...	12	15	20	25	30	35	40	43	45	47
58 03 92 10	TC 200 x .../MC 200 x ...	20	25	30	35	40	45	50	55	60	65
58 04 92 10	TC 250 x ...	20	30	40	45	50	55	60	65	70	75



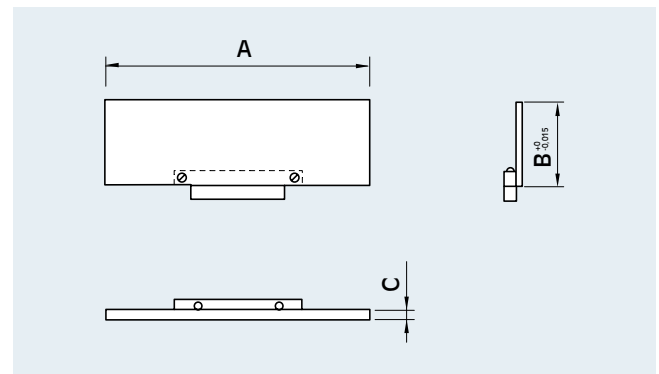
### Set of 6 pairs of angular parallels



Cod.	for type	$\alpha$ mm					
		20°	25°	30°	35°	40°	45°
58 01 93 06	TC 110 x .../MC 125 x ...	20°	25°	30°	35°	40°	45°
58 02 93 06	TC 150 x .../MC 150 x ...	20°	25°	30°	35°	40°	45°
58 03 93 06	TC 200 x .../MC 200 x ...	20°	25°	30°	35°	40°	45°
58 04 93 06	TC 250 x ...	20°	25°	30°	35°	40°	45°



### Pair of parallels



Cod.	B mm	A mm	C mm
58 01 35 10	10	106	3
58 01 35 12	12		
58 01 35 15	15		
58 01 35 20	20		
58 01 35 25	25		
58 01 35 28	28		
58 01 35 30	30		
58 01 35 33	33		
58 01 35 35	35		
58 01 35 37	37		

for type

TC 110 x .../MC 125 x ...

Cod.	B mm	A mm	C mm
58 02 35 12	12	146	3
58 02 35 15	15		
58 02 35 20	20		
58 02 35 25	25		
58 02 35 30	30		
58 02 35 35	35		
58 02 35 40	40		
58 02 35 43	43		
58 02 35 45	45		
58 02 35 47	47		

for type

TC 150 x .../MC 150 x ...

Cod.	B mm	A mm	C mm
58 03 35 20	20	196	4
58 03 35 25	25		
58 03 35 30	30		
58 03 35 35	35		
58 03 35 40	40		
58 03 35 45	45		
58 03 35 50	50		
58 03 35 55	55		
58 03 35 60	60		
58 03 35 65	65		

for type

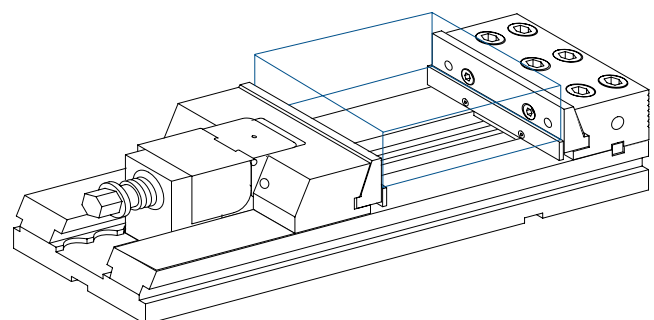
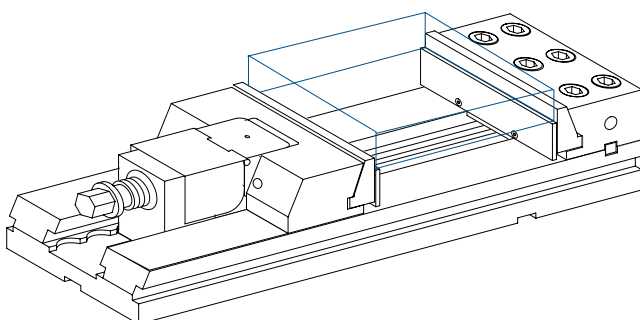
TC 200 x .../MC 200 x ...

Cod.	B mm	A mm	C mm
58 04 35 20	20	246	4
58 04 35 30	30		
58 04 35 40	40		
58 04 35 45	45		
58 04 35 50	50		
58 04 35 55	55		
58 04 35 60	60		
58 04 35 65	65		
58 04 35 70	70		
58 04 35 75	75		

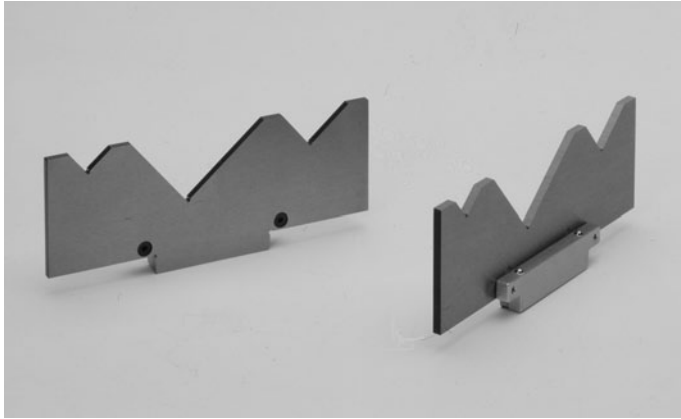
for type

TC 250 x ...

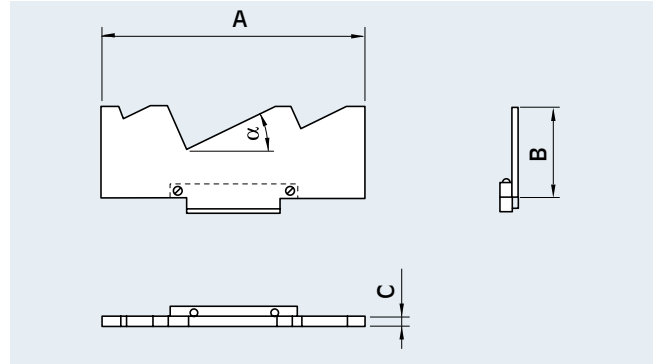
Working examples:







## Pair of angular parallels



Cod.	$\alpha$ mm	A mm	B mm	C mm
58 01 36 20	20	106	40	4
58 01 36 25	25			
58 01 36 30	30			
58 01 36 35	35			
58 01 36 40	40			
58 01 36 45	45			
58 02 36 20	20	146	50	4
58 02 36 25	25			
58 02 36 30	30			
58 02 36 35	35			
58 02 36 40	40			
58 02 36 45	45			

for type

TC 110 x .../MC 125 x ...

TC 150 x .../MC 150 x ...

Cod.	$\alpha$ mm	A mm	B mm	C mm
58 03 36 20	20	196	70	4
58 03 36 25	25			
58 03 36 30	30			
58 03 36 35	35			
58 03 36 40	40			
58 03 36 45	45			
58 04 36 20	20	246	80	4
58 04 36 25	25			
58 04 36 30	30			
58 04 36 35	35			
58 04 36 40	40			
58 04 36 45	45			

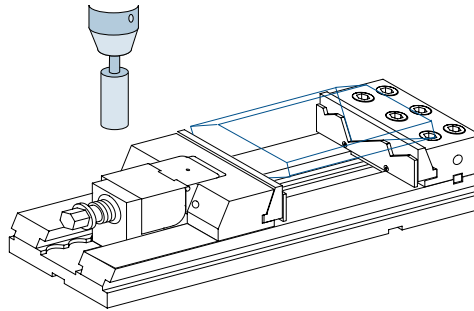
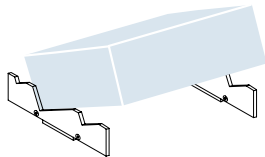
for type

TC 200 x .../MC 200 x ...

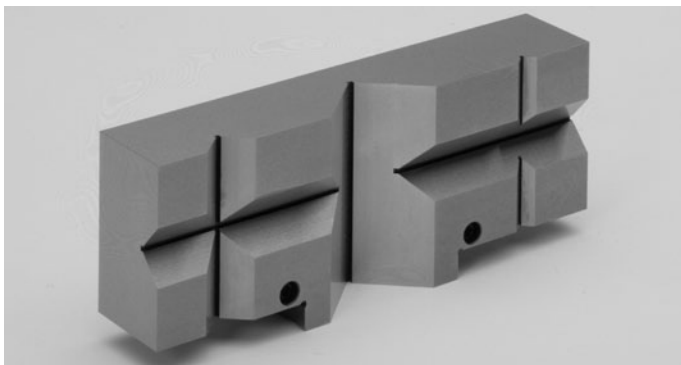
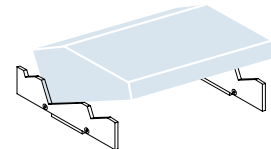
TC 250 x ...

Working examples:

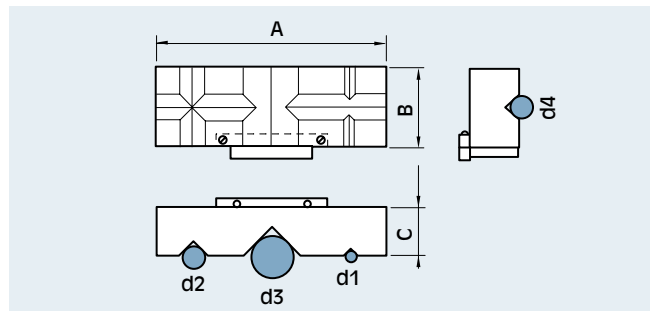
for machining



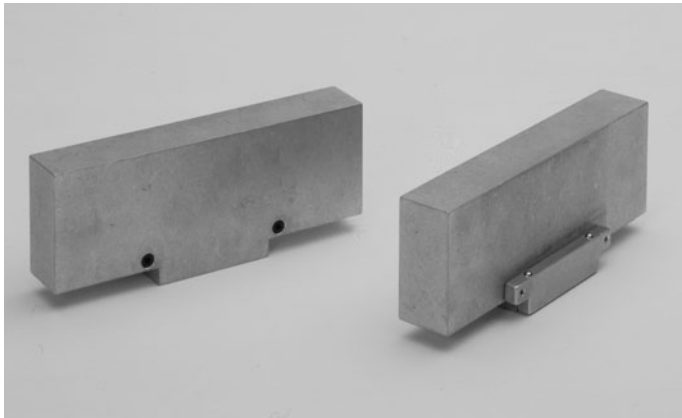
machined



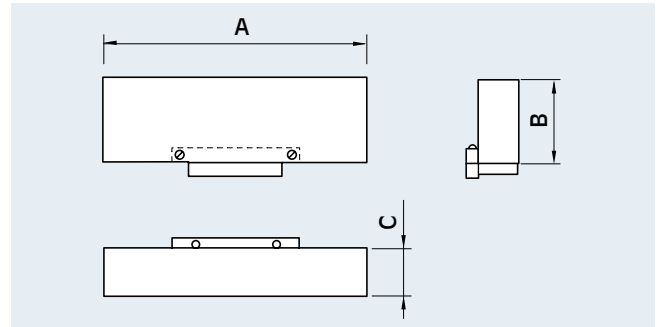
## V jaw



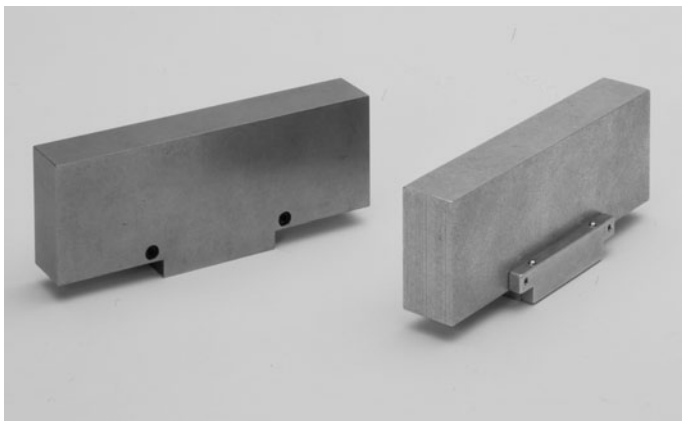
Cod.	for type	A mm	B mm	C mm	D1		D2		D3		D4	
					MIN-mm	MAX-mm	MIN-mm	MAX-mm	MIN-mm	MAX-mm	MIN-mm	MAX-mm
58 01 94 09	TC 110 x .../MC 125 x ...	106	40	30	3	6,5	6,5	15	15	35	7	16
58 02 94 09	TC 150 x .../MC 150 x ...	146	50	30	3	6,5	6,5	15	15	35	7	16
58 03 94 09	TC 200 x .../MC 200 x ...	196	70	50	6	13	13	30	30	70	15	35
58 04 94 09	TC 250 x ...	246	80	50	6	13	13	30	30	70	15	35



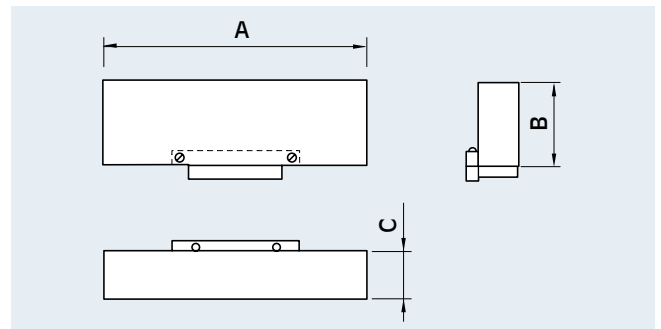
Pair of aluminium jaws



Cod.	for type	A mm	B mm	C mm
58 01 95 09	TC 110 /MC 125	106	40	19
58 02 95 09	TC 150 /MC 150	146	50	24
58 03 95 09	TC 200/MC 200	196	70	34
58 04 95 09	TC 250	246	80	39



Pair of steel soft jaws



Cod.	for type	A mm	B mm	C mm
58 01 96 09	TC 110/MC 125	106	40	19
58 02 96 09	TC 150 /MC 150	146	50	24
58 03 96 09	TC 200/MC 200	196	70	34
58 04 96 09	TC 250 x	246	80	39

Working examples:

